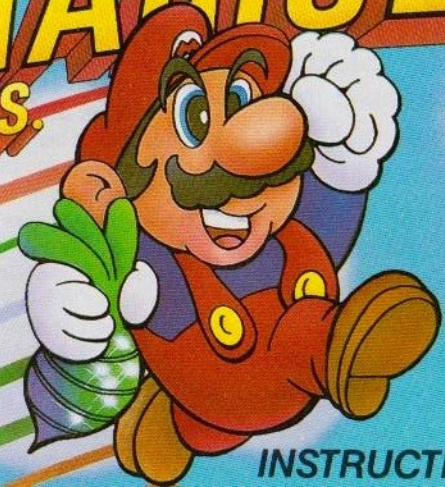


SUPER MARIO 2 BROS.



Need help with installation,
maintenance or service?
Call 1-800-255-3700.



Nintendo of America Inc.
P.O. Box 957, Redmond, WA 98073-0957 U.S.A.

Printed in Japan

INSTRUCTION BOOKLET [®]



This official seal is your assurance that Nintendo has reviewed this product and that it has met our standards for excellence in workmanship, reliability and entertainment value. Always look for this seal when buying games and accessories to ensure complete compatibility with your Nintendo Entertainment System.

⚠ WARNING ⚠

DO NOT USE WITH FRONT OR REAR PROJECTION TV

Do not use a front or rear projection television with your Nintendo Entertainment System® (“NES”) and NES games. Your projection television screen may be permanently damaged if video games with stationary scenes or patterns are played on your projection television. Similar damage may occur if you place a video game on hold or pause. If you use your projection television with NES games, Nintendo will not be liable for any damage. This situation is not caused by a defect in the NES or NES games; other fixed or repetitive images may cause similar damage to a projection television. Please contact your TV manufacturer for further information.

Thank you for selecting the Nintendo Entertainment System® Super Mario Bros.2® Pak.

Please read this instruction booklet to ensure proper handling of your new game, and then save the booklet for future reference.

CONTENTS

The Story of Super Mario Bros.2	3
Know the Basic Rules of the Game	5
Let's see how Mario and his friends move around.....	11
Items that help Mario and his friends.....	18
A Bonus Chance at the end of an Area	22
Obstructing your way—gangs of enemy characters	23

PRECAUTIONS

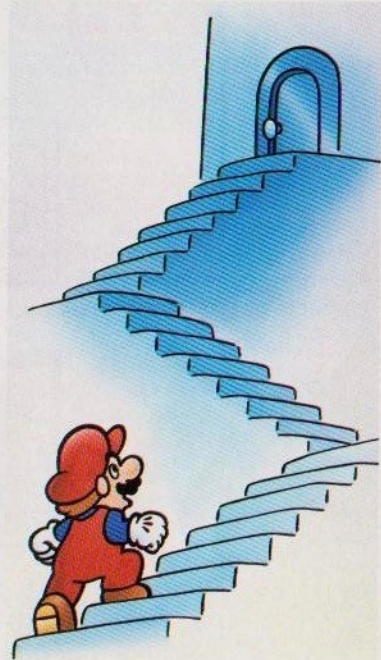
- 1) This is a high precision game. It should not be stored in places that are very hot or cold. Never hit it or drop it. Do not take it apart.
- 2) Avoid touching the connectors, and do not get them wet or dirty. Doing so may damage the game.
- 3) Do not clean with benzene, paint thinner, alcohol or other such solvents.

Note: In the interest of product improvement, Nintendo Entertainment System specifications and design are subject to change without prior notice.

The Story of Super Mario Bros.2

One evening, Mario had a strange dream. He dreamt of a long, long stairway leading up to a door. As soon as the door opened, he was confronted with a world he had never seen before spreading out as far as his eyes could see. When he strained his ears to listen, he heard a faint voice saying "Welcome to 'Subcon', the land of dreams. We have been cursed by Wart and we are completely under his evil spell. We have been awaiting your arrival. Please defeat Wart and return Subcon to its natural state. The curse Wart has put on you in the real world will not have any effect upon you here. Remember, Wart hates vegetables. Please help us!" At the same time this was heard, a bolt of lightning flashed before Mario's eyes. Stunned, Mario lost his footing and tumbled upside down. He awoke with a start to find himself sitting up in his bed. To clear his head, Mario talked to Luigi, Toad and Princess about the strange dream he had. They decide to go to a nearby

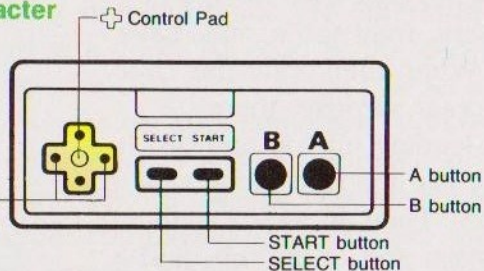
mountain for a picnic. After arriving at the picnic area and looking at the scenery, they see a small cave nearby. When they enter this cave, to their great surprise, there's a stairway leading up, up and up. It is exactly like the one Mario saw in his dream. They all walk together up the stairs and at the top, find a door just like the one in Mario's dream. When Mario and his friends, in fear, open the door, to their surprise, the world that he saw in his dream spreads out before them!....



Know the Basic Rules of the Game.

- First, pick which character you will play as.

Choose who you are by using the SELECT screen. Pick one of the four characters.



- 7 worlds — Clear all 20 areas

1~3	4~6	7~9	10~12	13~15	16~18	19~20
Start WORLD1	2	3	4	5	6	Goal 7

This game is comprised of 20 areas in 7 worlds as shown in the diagram above. There is a little boss at the end of each area. The big boss, Wart is waiting for you at the end of the final area once you've cleared all of the other areas.



Know what each character can do.

★ Jumping power

Each of the four have different jumping powers and ways of jumping.



• Mario

Average jumping power in almost all situations. But, the height he can jump decreases a little when he is carrying an item.



• Luigi

He can jump the highest and can go much farther but he jumps slowly. When he has an item, his power decreases more than Mario.



• Toad

He has the least jumping power. But since he has lifting power, the height he can jump and the speed he can run does not change even if he is carrying an item.



• Princess Toadstool

She is No.3 in jumping power. When you hold down the A button, she can float in the air for about 1.5sec. Her jumping power decreases quite a bit when she is carrying an item.



★Running

They all run at the same speed, but if they are carrying something, the order from the slowest to quickest is; Princess Toadstool, Luigi, Mario, Toad.



★Picking up mushroom blocks.

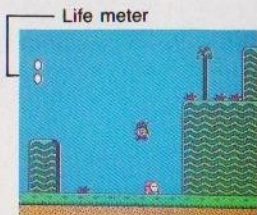
The speed at which they pick up items in order of the slowest to quickest is; Princess Toadstool, Luigi, Mario, Toad.



Watch out for Game Over.

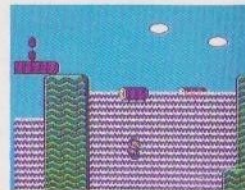
•Your game starts with three lives.

You lose a life when your life meter becomes 0. The life meter starts from the 2nd mark. When the marks are all white, you lose a life. This meter can increase to a maximum of 4 marks. If you slip up when the number of lives remaining is 0, the game will be over.



•You lose a life if you fall down.

There are holes and waterfalls. You will lose a life if you carelessly fall into one of these. Be careful not to fall when you jump or lose your footing. Also, do not fall when up high in the sky.



•You become smaller when the life meter reads 1 mark. Be careful.



Retry and Continue

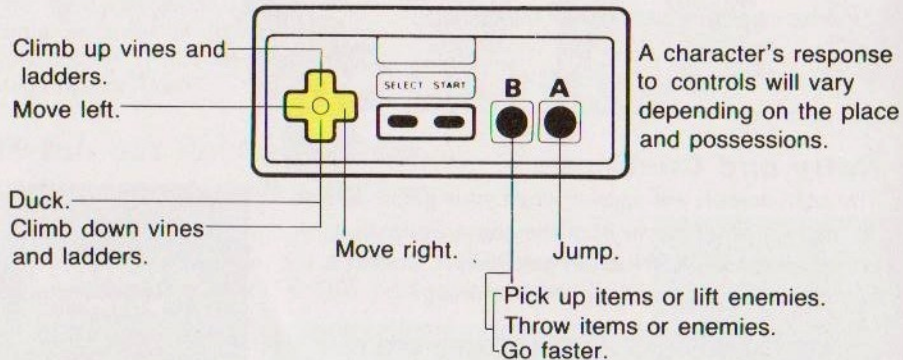
The right screen will appear when your game is over. To begin another game from the same world as it ended, press CONTINUE. Press RETRY to start a completely new game from the beginning.

NOTE: GAMES CAN BE CONTINUED ONLY TWICE.



Let's see how Mario and his friends move around.

How to use the controller



You can do all kinds of jumps.

•A jump on the spot



If you press the A button when standing still, you will jump on the spot. However, you cannot jump very high.

•Running jump

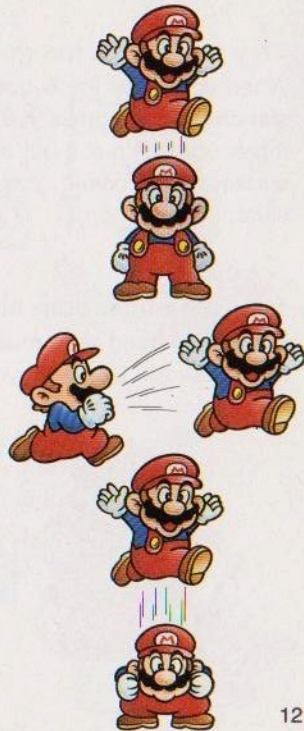


Jump by pressing either the right or left side of the control pad and using the A button while running. You can jump higher than a jump on the spot, so it is easier to avoid enemy attacks.

•Power squat jump



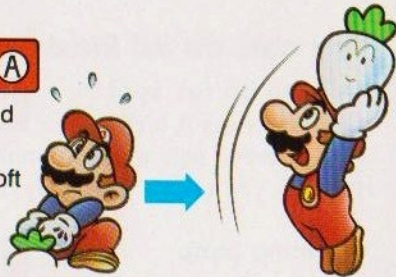
The player will flash when the bottom of the control pad is pressed and held. When you jump, you will be able to jump 1.5 times higher than regular jumps.



•Try pulling up the grass.

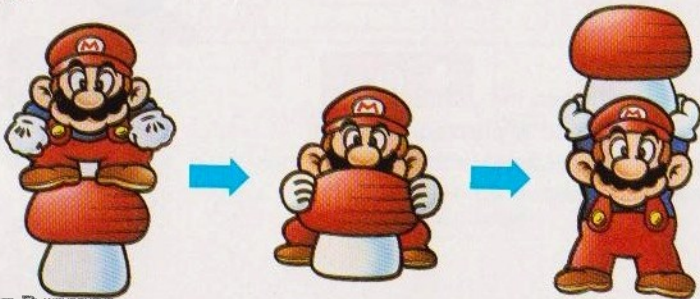


When you press the B button when standing on the grass you find growing here and there, you will pull it out and lift it up. On the surface of the desert, you can also dig in the soft sand.



•Carry a mushroom block.

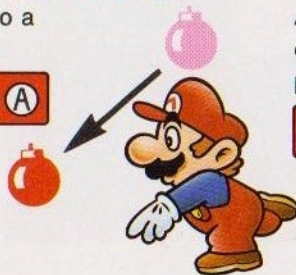
When you stand on a mushroom block and press the B button, you can lift it up just like a vegetable.



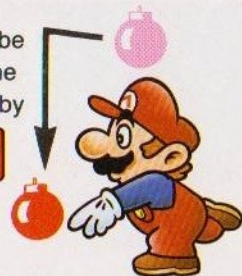
•Throw items.

[Bombs and Mushroom blocks]

It can be thrown to a place a little way away by

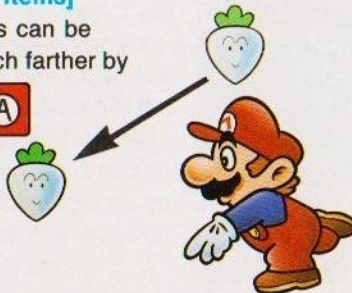


A bomb can be dropped at the player's feet by

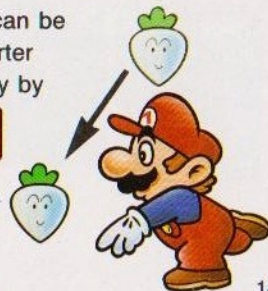


[For other items]

Other items can be thrown much farther by



Other items can be thrown a shorter distance away by



•Attack enemies with enemies.

If you stand on an enemy and press the B button, you will be able to lift up the enemy and can throw him at other enemies.



You can also go faster.

•Acceleration speed

You can run faster and faster by pressing either the left or right of the control pad and the B button at the same time.



•Dodge the enemy skillfully.

You can duck if you press the bottom of the control pad. With this, you can dodge flying enemies.

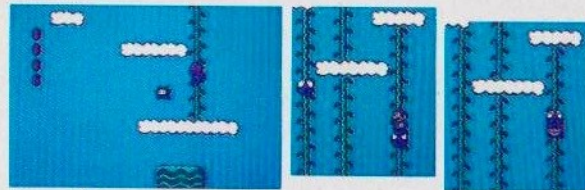


You can control Mario and his friends even when they are jumping. Come down skillfully on top of enemies.



•Try climbing vines and chains.

When Mario or one of his friends is over a vine or a chain, they can grasp the vine or chain if the top of the control pad is pressed. They can do it even in the middle of a jump. If you get on an enemy on top of a vine, you can toss him off.

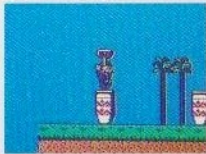


•Enter open doors.

To go through a door, stand in front of it and press the top of the control pad.



If you haven't got a key, you won't be able to go in locked doors.



Destroy walls with bombs!

There are places in caves and towers where brick walls obstruct your path. Use bombs to destroy the walls.



Items that help Mario and his friends.



Coins

You can win extra lives with luck and the coins you have collected so far.



Unripened vegetables

They are not fully grown. Just give them to the enemies.



Vegetables

Ripe vegetables. If you pull out a lot of them....



Turtle shells

When you throw them they slide and hit the enemy.



Bomb

A few seconds after they are picked up, they flicker and explode.



Mushroom block

They can be used as steps and for attacking the enemy.



Mushrooms

These appear when you enter a warp to Sub-space at a certain place. Your life meter will increase by one mark.



1 UP

When a 1 UP mushroom appears, you get a new life!



POW

Power block. When you throw this, the earth shakes and you can beat all the enemies.



Small heart

This appears when you beat a lot of enemies. The life meter recovers by one mark.



Key

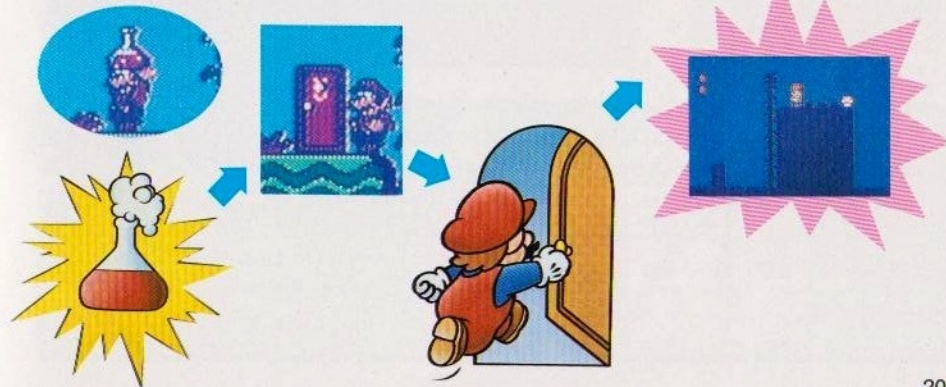
You need this to open locked doors. Your running speed does not change even if you have a key.

Really useful items

•Go to Sub-space with magic

If you find a magic potion, try throwing it. When you do that a door will appear. You'll enter the sub space if you press the top of the control pad while in front of the door.

The grass in Sub-space will turn into coins until you use magic twice in that area. If you place a door in a certain place, there will be a heart that will increase your life meter.



- You'll become invincible by collecting cherries.

A Starman will appear when you collect enough cherries. When you pick this up, you will become invincible for a limited time.



Cherries



Starman

- Time Stop

Vegetables are not only used for attack. If you have already taken four and you take a fifth one, a stopwatch will appear. When you take this, the enemy's movements will stop for a limited time.



Vegetable



Stop watch



A Bonus Chance at the end of an Area

- Clear the screen by overthrowing the boss character.

At the end of each area, there is a mask that becomes a gate to the next area. In order to open the gate, you must get a hold of the crystal ball. Ostro sometimes has the crystal ball, so get it back by defeating him. At the end of each world, the boss is waiting for you again...!



Attack the boss character by throwing mushroom blocks.

Bonus stage

The bonus game is one of chance!

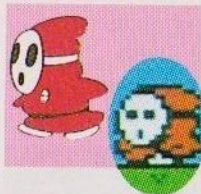
- Get more lives by collecting cherries.

You can win extra lives when you clear each area. You get 1 play for each coin you have collected from the last.



			1 more life
			2 more lives
			5 more lives
3 of any other symbol			1 more life

Obstructing your way — gangs of enemy characters



Shyguy - Red

A member of the "8 bits" (a club from evil dreams). He wears a mask because he's shy.



Shyguy - Pink

He moves back and forth on the hills. Carefully avoid him.



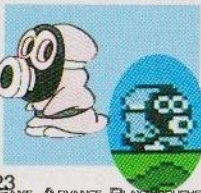
Tweeter

It's a bird with a mask. He hops. Try to get on top of his head.



Snifit - Red

A member of the "8 bits." He wears a mask and spits the bullets of evil dreams from his mouth.



Snifit - Gray

He jumps before spitting a bullet. Learn the timing of his bullets.



Snifit - Pink

He moves back and forth on the hills. Avoid his bullets with timely jumps.



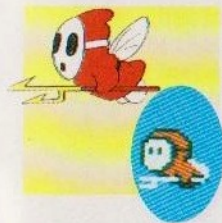
Ninji - 1

He is a little devil who appears in the dreams of NES players. He moves fast and will persistently chase you.



Ninji - 2

He stays in one spot and jumps repeatedly. A strange guy.



Beezo - Red

He attacks by diving at you. Looks like a Shyguy with wings.



Beezo - Pink

He attacks by flying straight at you. Stay calm and study his movements carefully.



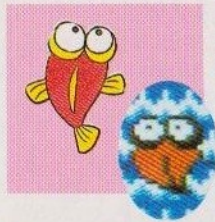
Hoopster

He is a creature about the size of a basketball. He resembles a ladybug. He lives on vines and crawls up and down.



Phanto

He is normally at rest and waits by keys. If you take a key, he will pursue you.



Trouter

It's a fish which lives in the world of dreams. You'll find it in waterfalls and rivers. He interferes with Mario.



Bob-Omb

He has a terrible temper. When he gets angry, he explodes.



Pidgit

He brings evil dreams. He can't fly on his own, so Wart gave him a flying carpet.



Porcupo

His body is entirely covered with spines so you can't climb on his back.



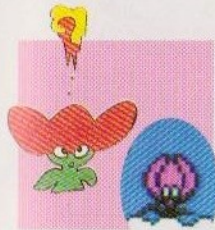
Albatoss

He used to be only a resident in the world of dreams. Now, by order of Wart, he works as a carrier of Bob-Omps.



Cobrat

Usually asleep in a jar, it moves on Wart's command, often appearing in the dreams of Toad.



Panser

The only plant life Wart created for the world of dreams. It spouts fire.



Pokey

It is a walking cactus. Its entire body, except for its head, is covered with thorns. Thorns will hurt you if you touch them.



Flurry

Snow monster. He'll chase you on ice skates.



Birdo

He serves as a means of transportation in the world of dreams. Shyguys often ride him.



Autobomb

Shyguys's favorite ride. It is also referred to as a "bad dream machine."



Spark

He shines and moves in a circular motion around the walls and floors of the underground. He moves fast or slow.



Ostro

He thinks he is a girl and he spits eggs from his mouth.



Mouser

It is a bomber of bad dreams that destroys good dreams. It is proud and it doesn't believe that it is just a mouse.



Fryguy

Wart gave life to this entity which is created from fire. He spits fireballs when he is mad.



Tryclyde

He was once an outsider, but now he is one of Wart's helpers since he impressed Wart with his cunning brain and offensive capabilities which are three times normal strength.

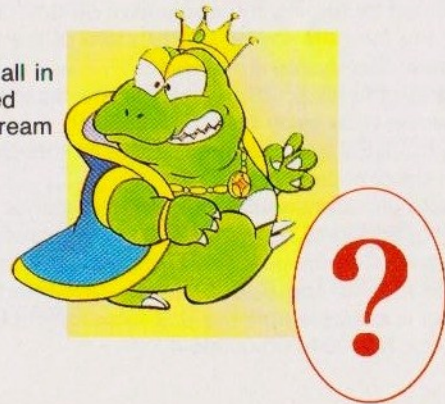


Clawgrip

He grows suddenly, and he is surprisingly skilled at throwing rocks.

Wart

He is the most mischievous of all in the world of dreams. He created monsters by playing with the dream machine.



COMPLIANCE WITH FCC REGULATIONS

This equipment generates and uses radio frequency energy and if not installed and used properly, that is, in strict accordance with the manufacturer's instructions, may cause interference to radio and television reception. It has been type tested and found to comply with the limits for a Class B computing device in accordance with the specifications in Subpart J of Part 15 of FCC Rules, which are designed to provide reasonable protection against such interference in a residential installation. However, there is no guarantee that interference will not occur in a particular installation. If this equipment does cause interference to radio or television reception, which can be determined by turning the equipment off and on, the user is encouraged to try to correct the interference by one or more of the following measures:

- Reorient the receiving antenna
- Relocate the NES with respect to the receiver
- Move the NES away from the receiver
- Plug the NES into a different outlet so that Control Deck and receiver are on different circuits.

If necessary, the user should consult the dealer or an experienced radio/television technician for additional suggestions. The user may find the following booklet prepared by the Federal Communications Commission helpful:

How to Identify and Resolve Radio—TV Interference Problems.

This booklet is available from the U.S. Government Printing Office, Washington, D.C. 20402, Stock No. 004-000-00345-4.

WARRANTY AND SERVICE INFORMATION

90-DAY LIMITED WARRANTY

HARDWARE*, ACCESSORIES, GAME PAKS ("PRODUCT")

*HARDWARE ONLY: TO EXPEDITE AUTHORIZATION OF ANY REQUIRED WARRANTY WORK, WE RECOMMEND THAT YOU COMPLETE AND RETURN YOUR WARRANTY CARD WITHIN 10 DAYS OF PURCHASE (OR RECEIPT AS A GIFT).

90-DAY LIMITED WARRANTY

Nintendo of America Inc. ("Nintendo") warrants to the original purchaser that this product shall be free from defects in material and workmanship for a period of 90 days from the date of purchase. If a defect covered by this warranty occurs during this 90-day warranty period, Nintendo will repair or replace the defective product or component part, at its option, free of charge.

WARRANTY SERVICE OR REPAIR/SERVICE AFTER EXPIRATION OF WARRANTY

To receive this warranty service or to receive service after warranty expiration:

1. **DO NOT** return your product to the retailer.
2. Please call the **NINTENDO WORLD CLASS SERVICE®** Center Consumer Assistance Hotline at: **1-800-255-3700**. Our hours of operation are from 4:00 am to Midnight, Pacific Time, Monday through Saturday, and from 6:00 am to 7:00 pm, Pacific Time on Sundays (times subject to change). If the Nintendo Service Representative is unable to solve the problem over the telephone, you will be referred to the nearest **AUTHORIZED NINTENDO WORLD CLASS SERVICE®** Center for prompt, professional warranty service or repair and replacement components. You may also refer to your yellow pages directory under the heading of *Video Games - Service & Repair*, for the nearest location.

To satisfy the needs of our customers, Nintendo maintains a professional network of **AUTHORIZED NINTENDO WORLD CLASS SERVICE®** Centers located in major metropolitan areas and also offers express factory service. In some instances it may be necessary to ship the complete product, **FREIGHT PREPAID AND INSURED FOR LOSS OR DAMAGE** to the nearest service location.

This warranty shall not apply if the product has been damaged by negligence, accident, unreasonable use, commercial use, modification, tampering, or by other causes unrelated to defective materials or workmanship. This warranty shall not apply if any product serial number has been altered, defaced, or removed.

WARRANTY LIMITATIONS

ANY APPLICABLE IMPLIED WARRANTIES, INCLUDING WARRANTIES OF MERCHANTABILITY AND FITNESS FOR A PARTICULAR PURPOSE, ARE HEREBY LIMITED TO NINETY DAYS FROM THE DATE OF PURCHASE AND ARE SUBJECT TO THE CONDITIONS SET FORTH HEREIN. IN NO EVENT SHALL NINTENDO BE LIABLE FOR CONSEQUENTIAL OR INCIDENTAL DAMAGES RESULTING FROM THE BREACH OF ANY EXPRESS OR IMPLIED WARRANTIES.

The provisions of this warranty are valid in the United States and Canada only. Some states/provinces do not allow limitations on how long an implied warranty lasts or exclusion of consequential or incidental damages, so the above limitations and exclusions may not apply to you. This warranty gives you specific legal rights, and you may also have other rights which vary between states/provinces.