

DRAGON BALL Z BUI'S FURY

Available in October 2004

The mighty Buu® awaits! Make his
defeat your greatest adventure!

© 2004 BIRD STUDIO/SHUEISHA, TOEI ANIMATION. Licensed by FUNimation® Productions, Ltd. All Rights Reserved. Dragon Ball Z and all logos, character names and distinctive likenesses thereof are trademarks of TOEI ANIMATION. Marketed and distributed by Atari, Inc., New York, NY. All other trademarks are the property of their respective owners.

Register Online Today!

It's as simple as 1, 2, 3!

1. Go to www.gameregister.com
2. Enter your game's info
3. Select a great offer

Receive game-related info and other special offers by
registering online today! That's it.
Atari will not contact you without your express permission.
For more information about our privacy policy, go to
http://www.us.atari.com/privacy_policy.asp

Atari, Inc.
417 Fifth Avenue
New York, NY 10016
USA

PRINTED IN USA



Part# 25636M

GAME BOY ADVANCE



INSTRUCTION BOOKLET



PLEASE CAREFULLY READ THE SEPARATE HEALTH AND SAFETY PRECAUTIONS BOOKLET INCLUDED WITH THIS PRODUCT BEFORE USING YOUR NINTENDO® HARDWARE SYSTEM, GAME PAK OR ACCESSORY. THIS BOOKLET CONTAINS IMPORTANT HEALTH AND SAFETY INFORMATION.

IMPORTANT SAFETY INFORMATION: READ THE FOLLOWING WARNINGS BEFORE YOU OR YOUR CHILD PLAY VIDEO GAMES

WARNING - Seizures

- Some people (about 1 in 4000) may have seizures or blackouts triggered by light flashes or patterns, such as while watching TV or playing video games, even if they have never had a seizure before.
- Anyone who has had a seizure, loss of awareness, or other symptom linked to an epileptic condition should consult a doctor before playing a video game.
- Parents should watch when their children play video games. Stop playing and consult a doctor if you or your child have any of the following symptoms:

Convulsions
Altered vision

Eye or muscle twitching
Involuntary movements

Loss of awareness
Disorientation

To reduce the likelihood of a seizure when playing video games:

1. Sit or stand as far from the screen as possible.
2. Play video games on the smallest available television screen.
3. Do not play if you are tired or need sleep.
4. Play in a well-lit room.
5. Take a 10 to 15 minute break every hour.

WARNING - Repetitive Motion Injuries and Eyestrain

Playing video games can make your muscles, joints, skin or eyes hurt after a few hours. Follow these instructions to avoid problems such as tendinitis, carpal tunnel syndrome, skin irritation or eyestrain:

- Avoid excessive play. It is recommended that parents monitor their children for appropriate play.
- Take a 10 to 15 minute break every hour, even if you don't think you need it.
- If your hands, wrists or arms or eyes become tired or sore while playing, stop and rest them for several hours before playing again.
- If you continue to have sore hands, wrists or arms or eyes during or after play, stop playing and see a doctor.

WARNING - Battery Leakage

Leakage of battery acid can cause personal injury as well as damage to your Game Boy. If battery leakage occurs, thoroughly wash the affected skin and clothes. Keep battery acid away from your eyes and mouth. Leaking batteries may make popping sounds.

To avoid battery leakage:

- Do not mix used and new batteries (replace all batteries at the same time).
- Do not mix alkaline and carbon zinc batteries.
- Do not mix different brands of batteries.
- Do not use nickel cadmium batteries.
- Do not leave used batteries in the Game Boy. When the batteries are losing their charge, the power light may become dim, the game sounds may become weak, or the display screen may be blank. When this happens, promptly replace all used batteries with new batteries.
- Do not leave batteries in the Game Boy or accessory for long periods of non-use.
- Do not leave the power switch on after the batteries have lost their charge. When you finish using the Game Boy, always slide the power switch OFF.
- Do not recharge the batteries.
- Do not put the batteries in backwards. Make sure that the positive (+) and negative (-) ends are facing in the correct directions. Insert the negative end first. When removing batteries, remove the positive end first.
- Do not dispose of batteries in a fire.

The official seal is your assurance that this product is licensed or manufactured by Nintendo. Always look for this seal when buying video game systems, accessories, games and related products.



Nintendo does not license the sale or use of products without the Official Nintendo Seal.

THIS GAME PAK WILL WORK ONLY WITH THE GAME BOY® ADVANCE VIDEO GAME SYSTEM.



THIS GAME PAK INCLUDES A MULTIPLAYER MODE WHICH REQUIRES A GAME BOY® ADVANCE GAME LINK CABLE.

TABLE OF CONTENTS

Getting Started	4
Controls	4
Saving and Loading	6
Special Fighting Moves	6
Battle Screen	9
Game Modes	10
Options	16
Credits	18
Atari Web Sites	21
Technical Support	22
End-User License Agreement	25

Important Legal Information

Copying of any video game for any Nintendo system is illegal and is strictly prohibited by domestic and international intellectual property laws. "Back-up" or "archival" copies are not authorized and are not necessary to protect your software. Violators will be prosecuted.

This video game is not designed for use with any unauthorized copying device or any unlicensed accessory. Use of any such device will invalidate your Nintendo product warranty. Nintendo (and/or any Nintendo licensee or distributor) is not responsible for any damage or loss caused by the use of any such device. If use of such device causes your game to stop operating, disconnect the device carefully to avoid damage and resume normal game play. If your game ceases to operate and you have no device attached to it, please contact the game publisher's "Technical Support" or "Customer Service" department.

The contents of this notice do not interfere with your statutory rights.

This booklet and other printed materials accompanying this game are protected by domestic and international intellectual property laws.

Rev-D (L)

LICENSED BY

Nintendo®

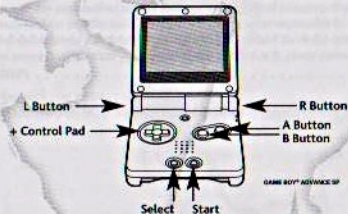


NINTENDO, GAME BOY, GAME BOY ADVANCE AND THE OFFICIAL SEAL ARE TRADEMARKS OF NINTENDO.
© 2001 NINTENDO. ALL RIGHTS RESERVED.

GETTING STARTED

1. Turn OFF the POWER switch on your Nintendo® Game Boy® Advance system. Never insert or remove a Game Pak when the power is ON.
2. Insert the Dragon Ball Z® Supersonic Warriors Game Pak into the slot on the Game Boy Advance. Press firmly to lock the Game Pak in place.
3. Turn ON the power switch. The main Start-up Screen will appear (if not, begin again at step 1).
4. Press **START** to proceed to the Main Menu.
5. Use the **+Control Pad** to highlight Story Mode, Z Battle, Challenge, Free Battle, Training, Versus or Option mode, and press the **A Button** to confirm. See pages 10-16 for details about game modes.

CONTROLS



MENU COMMANDS

+Control Pad	Highlight menu item
A Button	Confirm menu choice; Advance Text
B Button	Return to previous screen; Advance Text

FIGHTING CONTROLS

+Control Pad ◀ / ▶	Move character left / right
+Control Pad ◀ / ▶ double-tap	Sprint
+Control Pad ▲	Jump
+Control Pad ▲ double-tap	Hover in air
+Control Pad ▼	Return to ground from air
A Button	Strong attack (cannot rush opponent); also selects when used in menu
B Button	Weak attack (can rush opponent); also return to previous screen
A Button or B Button (press and hold)	Guard
L Button	Substitute Character
R Button	Charge up Ki
START	Pause game
L Button + ▲ / ▼ / ◀ / ▶ on +Control Pad	Instant transfer/substitute around opponent
Press SELECT , START , the A Button and the B Button simultaneously to soft reset.	

SAVING AND LOADING

You must complete an entire story in Story Mode or win all of the battles in Z Battle or Challenge Mode to be awarded prize money, which you can use to unlock additional characters, stories and difficulty settings. The game automatically saves your winnings and any features that you unlock. As soon as you unlock a feature, it is available for immediate use.

SPECIAL FIGHTING MOVES

In addition to the basic moves listed in the Controls chart (see page 5), each character can perform a number of special attacks.

Homing Sprint: Press and hold the R Button and tap the +Control Pad ◀ or ▶ to charge your enemy.

Sprint Attack: Press and hold the +Control Pad during a sprint and press the A Button or the B Button to counter an opponent's sprint attack with your own sprint attack.

Weak Power Shot: Press and hold the R Button and press the B Button to fire a weak energy attack. Continue to hold the L Button while



repeatedly pressing the B Button for rapid-fire multiple shots.

Strong Power Shot: Press and hold the R Button and press the A Button to fire a strong energy attack.

EX Strong Power Shot: Press and hold the R Button and press and hold the A Button to fire an extra strong energy attack.

Long Range Certain Kill: Press the R Button, the A Button and the B Button simultaneously to perform a long-range finishing move.

Short Range Certain Kill: Press the A Button and the B Button simultaneously to perform a short-range finishing move.

Special Ability: Certain characters have special abilities with 100 percent Ki. You can press the L Button and the R Button to launch your special ability when your Ki is at 100 percent.



Guard Crash: You can exhaust your opponent's Battle Gauge so he is no longer able to defend by continuously making him raise his guard.

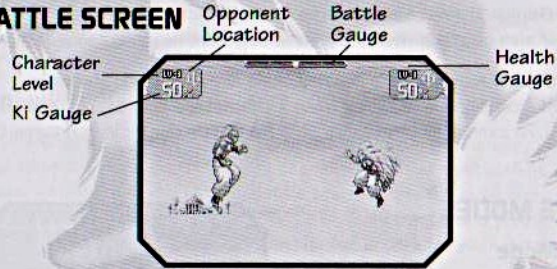
Z Combo: While your opponent is weakened by a Guard Crash (before his Battle Gauge returns to 50 percent), you can attack with all your might to launch a Z Combo.

Z Combo Finish: The instant the Battle Gauge returns to the center after a Z Combo, strike with a Strong Attack. You'll need good timing to pull off this exceptional move.

Instant Transfer: Press the L Button and the +Control Pad in the direction that you want to teleport. Your character will instantly appear in a new spot in the chosen direction.

Note: Be sure to check out the Tutorial (see page 14) to learn more about how to perform special fighting moves.

BATTLE SCREEN



Ki Gauge: This is the percentage of Ki a character has stored. You can increase your character's Ki percentage by pressing and holding the R Button.

Opponent Location: The green arrow indicates where your opponent is located.

Character Level: This indicates the level of the character that you are using in battle. You can purchase higher-level characters from the Store in the Options Menu.

Health Gauge: The colored bar above each character is his Health Gauge. If a character's Health Gauge is depleted, he loses the match.

Battle Gauge: A character's Battle Gauge depletes as he blocks an opponent's continuous attacks. When a character's Battle Gauge is depleted, he cannot block attacks until his Battle Gauge level returns to 50 percent.

GAME MODES

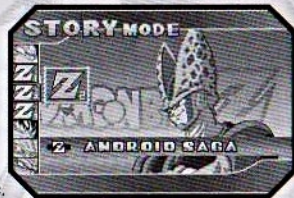
Story Mode

Story mode lets you battle your way through the legendary Dragon Ball Z® battles and story. Choose Story to follow the path of a single character, beginning with his/her first major battle.

Choose Saga to step into a complete saga, controlling various characters in historical battles.

Note: Only certain stories are available at the beginning of the game. In order to unlock new characters and sagas, you must win prize money and then visit the Shop (see "Shop" on page 17).

Press the +Control Pad ▲ or ▼ to select a character or saga. Press the



A Button to play. When you successfully complete a character story or saga, you collect prize money. You can use this money to purchase various items at the Shop.

Z Battle Mode

In this tournament mode, you choose either a team or a single character and compete in an all-out fighting championship. You must defeat a roster of opponents to win a Z Battle tournament. You collect prize money for winning. Choose 1 on 1 Battle or Team Battle and press the A Button to begin. You can view the top five scores for each battle type by going to the Options mode and selecting Ranking.

1 on 1 Battle

Press the +Control Pad ▲ or ▼ to select a character. Press the +Control Pad ◀ or ▶ to select a level. Press the A Button to compete in the tournament as a solo fighter.

Team Battle

Choose a team of three fighters to take into battle. Press the +Control Pad ▲ or ▼ to select a character. Press the +Control Pad ◀ or ▶ to select a level. Press the A Button to confirm. When you have chosen your



team, press **START** to proceed.

Note: The order in which you pick your fighters is the order in which they will appear on the battlefield when you cycle through them.

Challenge Mode

Choose one to three characters to match up against a team of three predetermined opponents. Press the **+Control Pad ▲** or **▼** to select a character. Press the **+Control Pad ◀** or **▶** to select a level. Press the **A Button** to confirm. When you have chosen all characters, press **START** to select the challenge team.



Press the **+Control Pad ▲** or **▼** to select the Challenge Team. Press the **A Button** to select and then press the **A Button** again to confirm.

You will receive prize money if you successfully defeat all of the opposing teams.

Free Battle Mode

Fight solo or in a team against your choice of opponents. Press the **+Control Pad ▲** or **▼** to select a character. Press the **+Control Pad ◀** or **▶** to select a level. Press the **A Button** to confirm. When you have chosen all characters, press **START** to begin the battle.

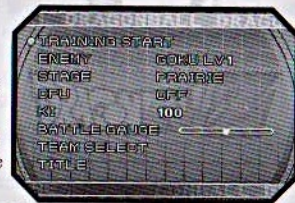
Money is not awarded for winning a Free Battle match.

Training Mode

Learn basic to advanced techniques and hone your skills in Training Mode.

Practice

Choose Practice to try out moves against a particular opponent or team, with particular fight parameters. Press the **+Control Pad ▲** or **▼** to select a character. Press the **+Control Pad ◀** or **▶** to select a level. Press the **A Button** to confirm. When you have chosen all characters, press **START** to set up fight parameters.



Training Start: Choosing this option begins the practice match.

Enemy: Press the **+Control Pad** ◀ or ▶ to select an opponent.

Stage: Press the **+Control Pad** ◀ or ▶ to select a battle arena.

CPU: Choose the level of fighting ability the AI opponent will display. Press the **+Control Pad** ◀ or ▶ to select your opponent's skill level: OFF, Beginner, Easy, Normal, Moderate or Difficult. If you select OFF, your opponent will not fight back.

Ki: Press the **+Control Pad** ◀ or ▶ to select the Ki level at which your character begins the match: 0%, 50% or 100%.

Battle Gauge: Press the **+Control Pad** ◀ or ▶ to choose the starting position of your character's Battle Gauge.

Team Select: Select this to return to the character select screen, where you can choose a different character or team.

Title: Quit Training mode and return to the Title screen.

Note: Press **SELECT** during a Practice session to reset the session. Press **START** during a Practice session to end the session and return to the Practice setup screen.

Tutorial

Select **Tutorial** to receive a step-by-step demonstration of fighting moves.

Press the **+Control Pad** ▲ or ▼ to select one of the following courses and then press the **A Button** to confirm:

- Movement Course (character movement)
- Fighting Course (melee attacks)
- Power Shot Course (Ki attacks)
- Certain Kill Course (special attacks)
- Substitution Course (how to switch between characters)
- Combo Course (basic strategy and combo moves).

Link Versus Mode

Select **Link Versus** to battle against friends using a Game Boy® Advance Game Link® cable (sold separately). Each player must have a Dragon Ball Z® Supersonic Warriors Game Pak and a Game Boy Advance.

Before linking the Game Link cable, all Game Boy Advance systems must be switched OFF. Link the Game Link Cable to each of the systems. Insert a Dragon Ball Z® Supersonic Warriors Game Pak into each system. Switch the systems ON.

At the Main Menu, both players select Link Versus. Both players will see a "Link Check" screen. The player that has the Player 1 Link Cable connection will receive a "Press the A Button when ready" prompt.

Both players will be sent to a character selection screen, where each player selects a single character or a two- or three-character team. Once characters are selected, press **START** to continue. The player that has the Player 1 Link Cable connection must press the **A Button** to start the match.

Once the match is over, there will be a screen announcing the winner and the stats for the match.

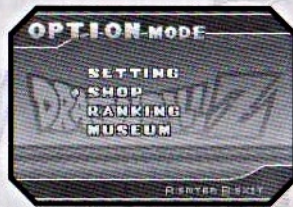
OPTIONS

Choose Option Mode from the Main Menu to access the following game options. Press the **+Control Pad ▲** or **▼** to select an option and press the **A Button** to access it.

Setting

Select Setting to adjust the following game settings:

Difficulty: Press the **+Control Pad ◀** or **▶** to set the game's difficulty to Beginner, Easy, Normal, Moderate or Difficult. The Moderate and



Difficult levels are unlockable from the shop.

BGM: Press the **+Control Pad ◀** or **▶** to turn the background music ON or OFF.

SE: Press the **+Control Pad ◀** or **▶** to turn sound effects ON or OFF.

Shop

When you win money from your battles, you can go to the Shop and purchase new and higher-level characters. There are three levels available for each character. You can also purchase sagas, the Moderate and Difficult difficulty levels, and Museum.

Ranking

Ranking shows Z Battle mode's top 5 scores for 1 on 1 Battle and Team Battle. Press the **A Button** to look at the #1 ranked player in 1 on 1 Battle. Press the **A Button** again to show the characters ranked 2 through 5. Press the **A Button** once again to view #1 ranked player for Team Battle. Press the **A Button** again to show the teams ranked 2 through 5.

Museum

You must buy this option in the Shop area of Option Mode before you can access it. In Museum, you can listen to 180 character voice clips, 25 background tunes, 54 game sound effects, and view 23 frames of DBZ art.

CREDITS

Atari

Peter Armstrong
Director of Product Development

Mike Cucchiarella
Senior Producers

Steve Charbonneau
Amy Jordan
Chris Lundeen
Associate Producers

Matt Collins
Brand Manager

Tom Nichols
Director of Marketing

Steve Martin
Director of Creative Services

Elizabeth Mackney
*Director of Editorial &
Documentation Services*

Kristine Meier
Art Director

Melissa Caccavaro
Graphic Designer

Kurt Carlson
Documentation Specialist

Paul Collin
Copywriter

Michael Gilmartin
Director of Publishing Support

Bill Carroll
Q.A. Manager

Ken Ford
I.T. Manager/Western Region

Michael Vetsch
Manager of Technical Support

Chuck Nunez
Dave Strang
Jason Cordero
Arthur Long
Q.A. Testing Supervisors

Franco Junio
Lead Tester

Kenny Yan
Assistant Lead

David Degnan
Ed Toribio
Dano Garcia

Michael Shamsid-Deen
Marco Mah

Mark Alibayan
Kevin Hogan

Leo Trac
Earl Amores

Fiesal Maroof
Sarah Cherlin
Testers

Ken Edwards
Engineering Services Specialist

Eugene Lai
Dan Burkhead
Engineering Services Technicians

Cecelia Hernandez
Sr. Manager Strategic Relations

Joy Schnee
Sr. Manager Strategic Relations

Shaila Patel
Strategic Relations Specialist

Special Thanks
Akira Toriyama
Shueisha, Inc.
Toei Animation, Inc.

Planning and Development
BANPRESTO Co., Ltd.

Hiroshi Kosuge
Producer

CAVIA, Inc
Hideshi Tatsuno
Producer

Arc System Works Co., Ltd.
Junya Motomura
Director

Kazunori Taguchi
Art Director

Ayami Yamamuro
Yukinori Gouma
Kazushige Toyosawa
Jun Ishiguro
Hiroaki Masuzawa
Artwork

Shingo Fujita
Jeon Seongkoo
Kenichi Suzuki
Minoru Kidooka
Programming

FUNimation Productions, Ltd.
Gen Fukunaga
President

Daniel Conanougher
Executive Vice-President
Cindy Brennan Fukunaga
Vice-President, Marketing

Bob Brennan
Director of Licensing
Jeremy Snead
Licensing Account Manager

Jeremy Carlisle
Scriptwriter

DBZ Supersonic Warriors
Voice Actors
Don (Sonny) Strait
Krillin

Christopher Sabat
*Vegeta, Piccolo, Butte, Jeice,
Recoome*

Justin Cook
Super Buu

Sean Schemmel
Goku

Meredith McCoy
Android 18

Jeremy Inman
Android 16

Kyle Hebert
Gohan

Kent Williams
Dr. Gero

Linda Young
Frieza

Stephanie Nadolny
Kid Gohan

Eric Vale
Trunks

Dameon Clarke
Cell

Brice Armstrong
Captain Ginyu

Bill Townsley
Guldo

Kara Edwards
Gotenks

Laura Bailey
Gotenks

Josh Martin
Majin Buu, Kid Buu

ATARI WEB SITES

To get the most out of your new game, visit us at:

<http://www.us.atari.com>

To send e-cards to your friends, download wallpapers, or get access to other free stuff, visit our Freebies section at:

www.us.atari.com/freebies

If you would like to chat with other gamers, as well as developers, visit our Community Forum area at:

www.ataricomunity.com

Kids, check with your parent or guardian before visiting any web site.

Chat Messages: Atari does not monitor, control, endorse, or accept responsibility for the content of chat messages. You are strongly encouraged not to give out identity or other personal information through chat message transmissions. Kids, check with your parent or guardian if you are concerned about any chat you receive.

Use of Atari web sites is subject to terms and conditions, which you can access at:

www.us.atari.com/terms_of_service.asp

TECHNICAL SUPPORT (U.S. & CANADA)

Help Via the Internet

Up-to-the-minute technical information about Atari products is generally available 24 hours a day, 7 days a week via the Internet at:

<http://www.atarisupport.com>

Through this site you'll have access to our FAQ (Frequently Asked Questions) documents, our Hints/Cheat Codes if they're available, and an E-Mail area where you can get help and ask questions if you do not find your answers within the FAQ.

Note: In the event we must send you a Hint Sheet, FAQ document, patch or update disc via E-mail, we may require verifiable consent from a parent or guardian in order to protect children's privacy and safety online. Consent Forms are available at the web site listed above.

Help Via Telephone in the United States & Canada

For phone assistance, call Atari Technical Support at (425) 951-7110. Our Interactive Voice Response system is generally available 24/7, providing automated support solutions immediately.

This console-based product has automated support, which includes information such as gameplay tips, information on Control Keys, possible Cheat Code combination keys, and instructions for finding secret screens

and/or additional game levels (if these type of items exist and are made available for this particular product).

Great News! We've improved our Automated Systems so that you can get product-specific Troubleshooting help more quickly. All you need to do is enter the product's Part # when prompted to do so. This will take you directly to all of our known issues and solutions for this title. The product's Part # is located in several places (on the CD label, Game Pak, package and/or plastic disc case, if applicable) and is usually identified by a number such as 04-12345. When prompted by the Automated System, enter the last five digits of your product's Part #. (For example, Part # 04-12345 would require that you enter the "12345" portion of the number for that product.) **Note:** Some products simply feature a five-digit Part # without an "04-" prefix.

Live support is generally available Monday through Friday, 8:00 AM until 6:00 PM (Pacific Time). **Note:** We may be closed on major holidays.

Product Return Procedures in the United States & Canada

In the event our technicians at (425) 951-7110 determine that you need to forward materials directly to us, please include a brief letter explaining what is enclosed and why. Make sure you include the Return Merchandise Authorization Number (RMA#) supplied to you by the technician, and your telephone number in case we need to call you. You will receive the

mailing address when the technician gives you the RMA#. Any materials not containing this RMA# will be returned to you unprocessed.

Warranty Policy in the United States & Canada

If our technicians determine that the product storage medium is found to be defective within ninety (90) days of original purchase, (unless otherwise provided by applicable law), Atari will replace the item free of charge, to the original purchaser, if the item is accompanied by the original dated receipt and packaging.

END-USER LICENSE AGREEMENT

IMPORTANT — READ CAREFULLY: Please be sure to carefully read and understand all of the rights and restrictions described in this End-User License Agreement ("EULA").

AGREEMENT

This document is an agreement between you and Atari, Inc. and its affiliated companies ("Company"). The enclosed software game disc(s), cartridge or Game Pak ("Software") and any accompanying printed materials are licensed to you only on the condition that you accept all of the terms contained in this EULA.

By opening this package and installing or otherwise using the Software you agree to be bound by the terms of this EULA. If you do not agree to the terms of this EULA you may not install or use the Software and within 15 days of purchase you must call the Tech Support telephone number listed in the manual accompanying the Software (the "Manual"). Select the Automated Phone System's Main Menu option for Consumer Services and follow the prompts.

You will be given a Return Merchandise Authorization number (RMA #) by the technician. You then have 15 days from the date of this contact to return the Software in its protective covering, the Manual and the original sales invoice to the address supplied to you.

If this is a PC product, when you install the Software you will be asked to review and either accept or not accept the terms of the EULA by clicking the "I Accept" button. By clicking the "I Accept" button you acknowledge that you have read the EULA, understand it and agree to be bound by its terms and conditions.

COPYRIGHT

The Software is protected by copyright laws and international copyright treaties, as well as other intellectual property laws and treaties. All title and copyrights in and to the Software (including but not limited to any images, photographs, animation

video, music, text and "applets" incorporated into the Software) and any printed materials accompanying the Software are owned by the Company or its Licensors.

GRANT OF LICENSE

The Software is licensed and not sold to you and its use is subject to this EULA. The Company grants you a limited, personal, non-exclusive license to use the Software in the manner described in the user documentation. The Company reserves all rights not expressly granted to you in this EULA.

PERMITTED USES

1. If the Software is configured for loading on a hard drive, you may install and use the Software on a single computer.
2. You may make and maintain one copy of the Software for backup and archival purposes, provided that the original and copy of the Software are kept in your possession.
3. You may permanently transfer all your rights under this EULA, provided you retain no copies, you transfer all of the Software (including all component parts, the media and printed materials and any upgrades) and the recipient reads and accepts this EULA.

RESTRICTIONS

1. You may not delete or obscure any copyright, trademark or other proprietary notice on the Software or accompanying printed materials.
2. You may not decompile, modify, reverse engineer, disassemble or otherwise reproduce the Software.
3. You may not copy, rent, lease, sublicense, distribute, publicly display the Software, create derivative works based on the Software (except to the extent expressly permitted in the Editor and End-User Variation section of this Agreement or other documentation accompanying the Software) or otherwise commercially exploit the Software.
4. You may not electronically transmit the Software from one computer, console or other platform to another or over a network.

5. You may not use any backup or archival copy of the Software for any purpose other than to replace the original copy in the event it's destroyed or becomes defective.

EDITOR AND END-USER VARIATIONS

If the Software includes a feature that allows you to modify the Software or to construct new variations (an "Editor"), you may use such Editor to create modifications or enhancements to the Software, including the construction of new levels (collectively the "Variations"), subject to the following restrictions. Your Variations: (i) must only work with the full, registered copy of the Software; (ii) must not contain modifications to any executable file; (iii) must not contain any libelous, defamatory or other illegal material, material that is scandalous or invades the rights of privacy or publicity of any third party; (iv) must not contain any trademarks, copyright-protected work or other property of third parties; and (v) may not be commercially exploited by you, including but not limited to making such Variations available for sale or as part of a pay-per-play or timesharing service.

TERMINATION

This EULA is effective until terminated. You may terminate this EULA at any time by destroying the Software. This EULA will terminate automatically without notice from the Company if you fail to comply with any provisions of this EULA. All provisions of this EULA as to warranties, limitation of liability, remedies and damages will survive termination.

LIMITED WARRANTY AND DISCLAIMER OF WARRANTIES

You are aware and agree that use of the Software and the media on which is recorded is at your sole risk. The Software and media are supplied "AS IS." Unless otherwise provided by applicable law, the Company warrants to the original purchaser of this product that the Software storage medium will be free from defects in materials and workmanship under normal use for ninety (90) days from the date of purchase. The warranty is void if the defect has arisen through accident, abuse, neglect or misapplication. If the Software fails to conform to this warranty, you may at your sole and exclusive remedy, obtain a replacement free of charge if you return the defective Software. Follow the Product Return Procedures described in the Manual. The Company does not warrant that the Software or its operations or functions will meet your requirements, or that the use of the Software will be without interruption or error.

TO THE FULLEST EXTENT PERMISSIBLE UNDER APPLICABLE LAW, EXCEPT FOR THE EXPRESS WARRANTY SET FORTH ABOVE, THE COMPANY DISCLAIMS ALL WARRANTIES, EXPRESS OR IMPLIED, INCLUDING AND WITHOUT LIMITATION, THE IMPLIED WARRANTIES OF MERCHANTABILITY AND FITNESS FOR A PARTICULAR PURPOSE AND NON-INFRINGEMENT. EXCEPT FOR THE EXPRESS WARRANTY SET FORTH ABOVE, THE COMPANY DOES NOT WARRANT, GUARANTEE OR MAKE ANY REPRESENTATION REGARDING THE USE OR THE RESULTS OF THE USE OF THE SOFTWARE IN TERMS OF ITS CORRECTNESS, ACCURACY, RELIABILITY, CURRENTNESS OR OTHERWISE. SOME JURISDICTIONS DO NOT ALLOW THE EXCLUSION OF OR LIMITATIONS ON IMPLIED WARRANTIES, SO THE ABOVE EXCLUSIONS AND LIMITATIONS MAY NOT APPLY TO YOU.

LIMITATION OF LIABILITY

IN NO EVENT WILL THE COMPANY OR ITS EMPLOYEES OR LICENSORS BE LIABLE FOR ANY INCIDENTAL, INDIRECT, SPECIAL, CONSEQUENTIAL OR PUNITIVE DAMAGES, OR ANY DAMAGES WHATSOEVER (INCLUDING, WITHOUT LIMITATION, DAMAGES FOR INJURY TO PERSON OR PROPERTY, FOR LOSS OF PROFITS, BUSINESS INTERRUPTION, LOSS OF BUSINESS INFORMATION, LOSS OF PRIVACY, FAILURE TO MEET ANY DUTY AND NEGLIGENCE) ARISING OUT OF OR IN ANY WAY RELATED TO THE USE OR INABILITY TO USE THE SOFTWARE, EVEN IF THE COMPANY OR AN AUTHORIZED REPRESENTATIVE OF THE COMPANY HAS BEEN ADVISED OF THE POSSIBILITY OF SUCH DAMAGES. SOME JURISDICTIONS DO NOT ALLOW THE EXCLUSION OF LIABILITY FOR INCIDENTAL OR CONSEQUENTIAL DAMAGES, SO THE ABOVE EXCLUSION MAY NOT APPLY TO YOU.

IN NO EVENT WILL THE LIABILITY OF THE COMPANY FOR DAMAGES WITH RESPECT TO THE SOFTWARE EXCEED THE AMOUNTS ACTUALLY PAID BY YOU FOR THE SOFTWARE.

CHOICE OF LAW AND VENUE

This EULA is governed by the laws of the United States of America and the State of New York, exclusive of its conflicts of law provisions. The exclusive venue for litigation regarding or arising from this EULA is New York County, New York and you agree to submit to the Jurisdiction of the courts of New York County, New York for any such litigation.

MISCELLANEOUS

If any provision or portion of this EULA is found to be unlawful, void, or for any reason unenforceable, it will be severed from and in no way affect the validity or enforceability of the remaining provisions of the EULA.

This EULA constitutes the entire agreement between you and the Company regarding the Software and its use.

© 2004 BIRD STUDIO/SHUEISHA, TOEI ANIMATION. Licensed by FUNimation® Productions, Ltd. All Rights Reserved.

Dragon Ball Z and all logos, character names and distinctive likenesses thereof are trademarks of TOEI ANIMATION.

© BANPRESTO 2004. Marketed and distributed by Atari, Inc., New York, NY.

All other trademarks are the property of their respective owners.